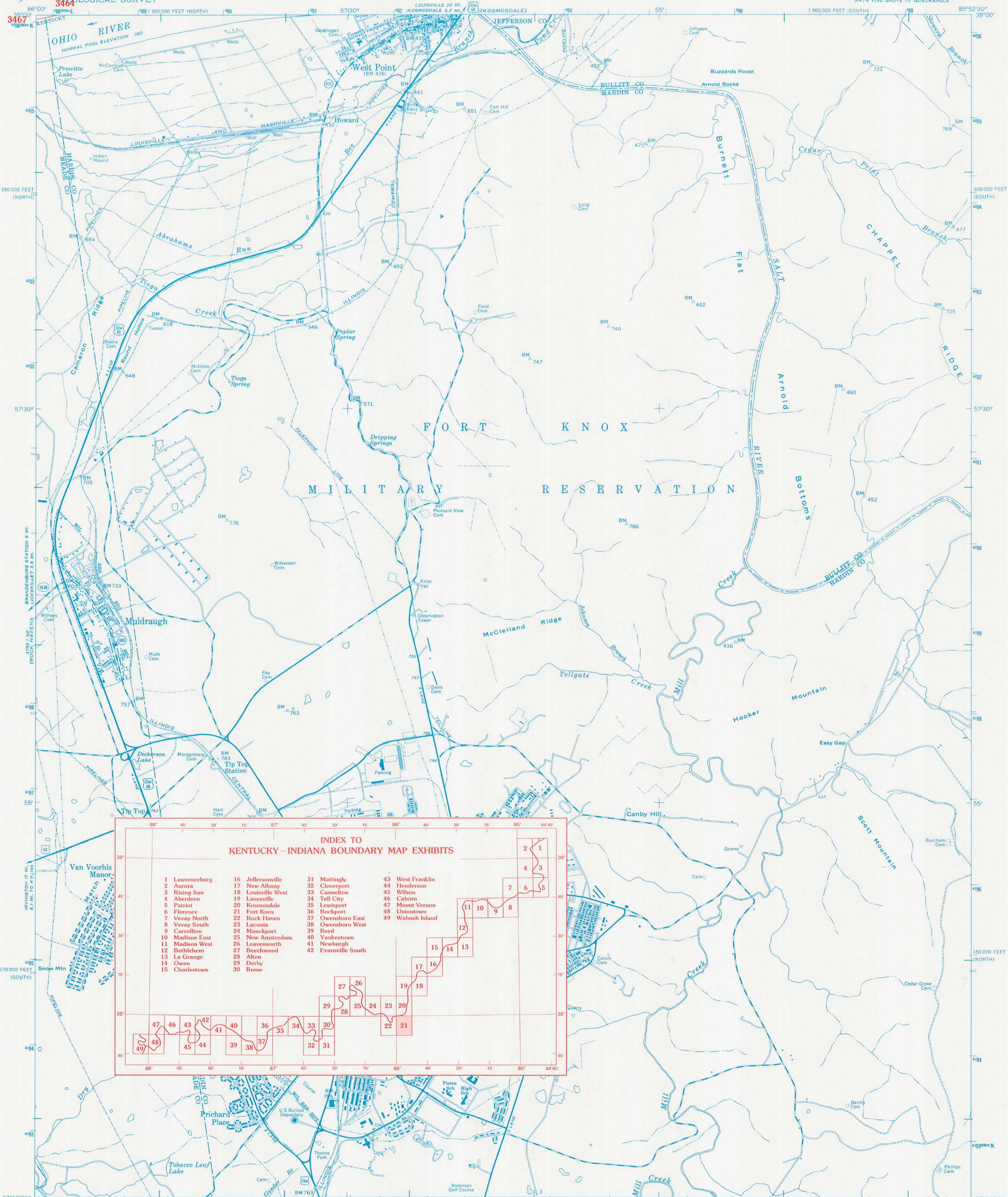


KENTUCKY-INDIANA BOUNDARY

UNITED STATES
DEPARTMENT OF THE INTERIOR
GEOLOGICAL SURVEY

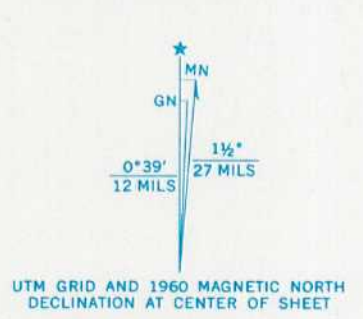
FORT KNOX QUADRANGLE
KENTUCKY
7.5 MINUTE SERIES (BOUNDARY)
NW/4 VINE GROVE 15' QUADRANGLE



**INDEX TO
KENTUCKY-INDIANA BOUNDARY MAP EXHIBITS**

1 Lawrenceburg	16 Jeffersonville	31 Mattingly	43 West Franklin
2 Aurora	17 New Albany	32 Cloverport	44 Henderson
3 Rising Sun	18 Louisville West	33 Cannelton	45 Wilson
4 Aberdeen	19 Lanesville	34 Tell City	46 Caborn
5 Patriot	20 Kosmosdale	35 Lewisport	47 Mount Vernon
6 Florence	21 Fort Knox	36 Rockport	48 Uniontown
7 Vevay North	22 Rock Haven	37 Owensboro East	49 Wabash Island
8 Vevay South	23 Laconia	38 Owensboro West	
9 Carrollton	24 Mauckport	39 Reed	
10 Madison East	25 New Amsterdam	40 Yankeetown	
11 Madison West	26 Leavenworth	41 Newburgh	
12 Bethlehem	27 Beechwood	42 Evansville South	
13 La Grange	28 Alton		
14 Owen	29 Derby		
15 Charlestown	30 Rome		

Mapped by the Army Map Service and the Geological Survey
Edited and published by the Geological Survey
Control by USGS, USC&GS, and USCE
Topography from aerial photographs by photogrammetric methods
Aerial photographs taken 1944 and 1945. Field check 1946.
Revised by the Geological Survey 1960
Polyconic projection. 1927 North American datum
10,000-foot grids based on Kentucky coordinate system, south
and north zones
1000-meter Universal Transverse Mercator grid ticks,
zone 16, shown in blue



1927 NORTH AMERICAN DATUM
KENTUCKY-INDIANA BOUNDARY COORDINATES DEFINING
THE BOUNDARY ON THIS MAP ARE: NUMBERS 3464 THROUGH 3467
THE COMPLETE LISTINGS OF THE KENTUCKY-INDIANA BOUNDARY
COORDINATES ARE CONTAINED IN EXHIBIT NO. 50
COORDINATE NUMBERS SHOWN WITHIN THIS MAP INDICATE
APPROXIMATE LOCATIONS AND ARE INTENDED AS REFERENCE ONLY



ROAD CLASSIFICATION

Heavy-duty	Light-duty
Medium-duty	Unimproved dirt
U.S. Route	State Route

FORT KNOX, KY.
NW/4 VINE GROVE 15' QUADRANGLE
N 37°52.5' - W 85°52.5' / 7.5
1960
AMS 3859 IV NW-SERIES V853

**THE OHIO RIVER BOUNDARY WAS DETERMINED
IN KENTUCKY V. INDIANA, NO. 81, ORIGINAL,
474 U.S. THE FINAL DECREE WAS
ENTERED ON NOVEMBER 4, 1895.**

**KENTUCKY v. INDIANA No. 81, Orig.
JOINT EXHIBIT NO. 21**