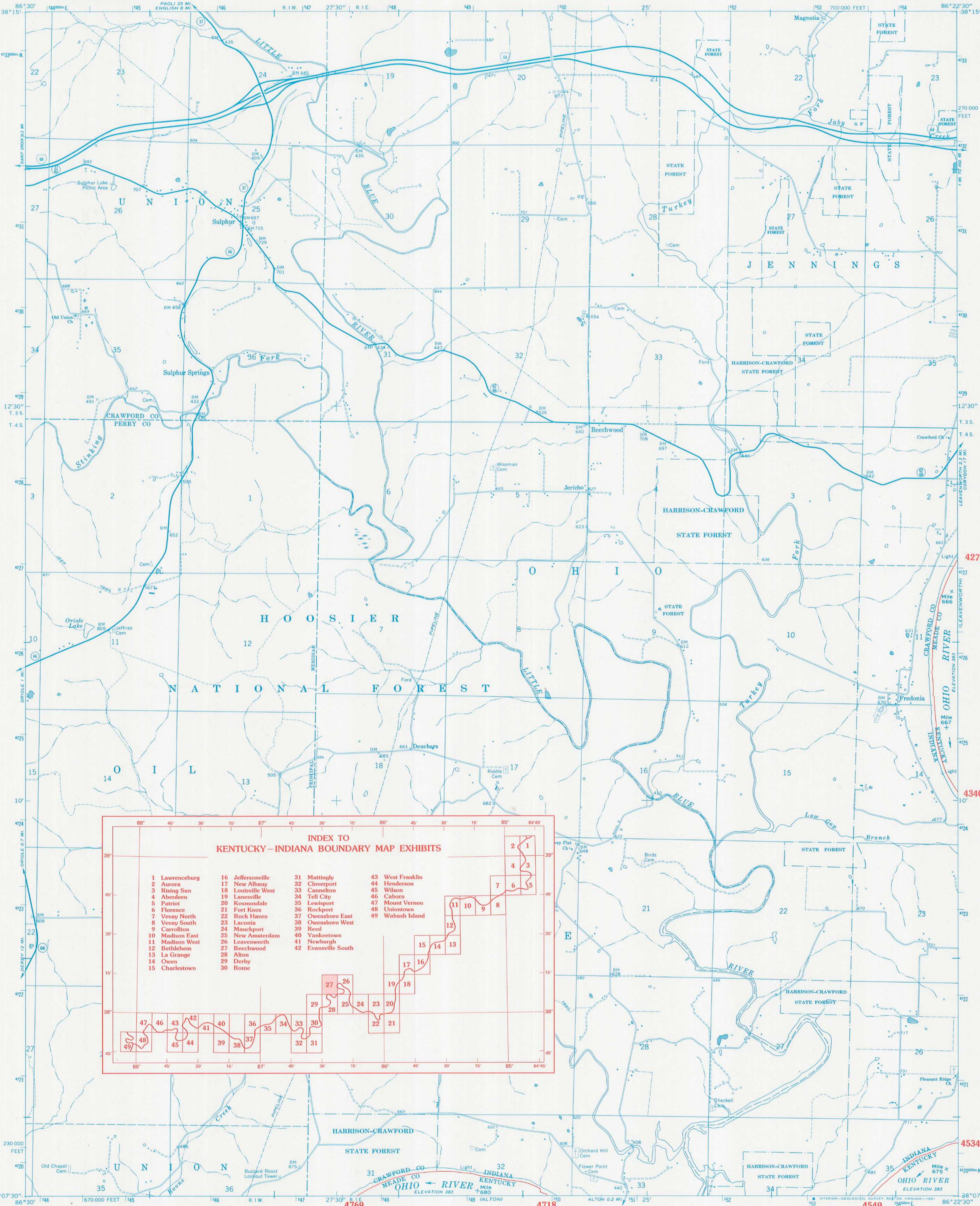


KENTUCKY-INDIANA BOUNDARY



**INDEX TO
KENTUCKY-INDIANA BOUNDARY MAP EXHIBITS**

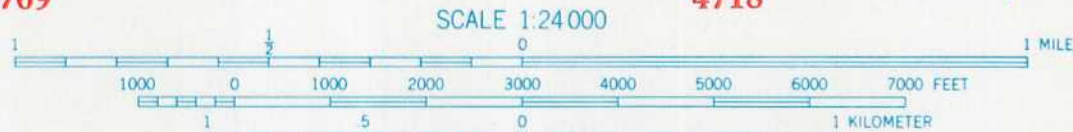
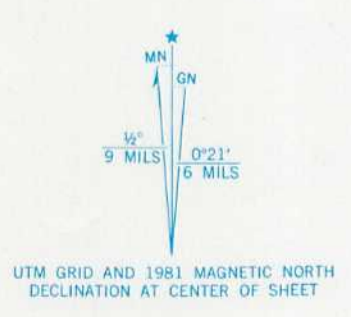
1 Lawrenceburg	16 Jeffersonville	31 Mattingly	43 West Franklin
2 Aurora	17 New Albany	32 Cloverport	44 Henderson
3 Rising Sun	18 Louisville West	33 Cannelton	45 Wilson
4 Aberdeen	19 Lanesville	34 Tell City	46 Caborn
5 Patriot	20 Kosmosdale	35 Lewistown	47 Mount Vernon
6 Florence	21 Fort Knox	36 Rockport	48 Uniontown
7 Vevay North	22 Rock Haven	37 Owensboro East	49 Wabash Island
8 Vevay South	23 Laconia	38 Owensboro West	
9 Carrollton	24 Mauckport	39 Reed	
10 Madison East	25 New Amsterdam	40 Yankeetown	
11 Madison West	26 Leavenworth	41 Newburgh	
12 Bethlehem	27 Beechwood	42 Evansville South	
13 La Grange	28 Alton		
14 Owen	29 Derby		
15 Charlestown	30 Rome		

Mapped, edited, and published by the Geological Survey
Revised in cooperation with Indiana Department
of Natural Resources

Control by USGS, USC&GS, USCE, and Indiana Flood Control
and Water Resources Commission

Topography by photogrammetric methods from aerial photographs
taken 1947 and 1948. Field checked 1950. Revised from aerial
photographs taken 1969. Field checked 1970

Polyconic projection
10,000-foot grid based on Indiana coordinate system, west zone
1000-meter Universal Transverse Mercator grid ticks,
zone 16, shown in blue. -1927 North American Datum



1927 NORTH AMERICAN DATUM
KENTUCKY-INDIANA BOUNDARY COORDINATES DEFINING
THE BOUNDARY ON THIS MAP ARE: NUMBERS 4278 THROUGH 4340
4534 THROUGH 4549 AND 4718 THROUGH 4769
THE COMPLETE LISTINGS OF THE KENTUCKY-INDIANA BOUNDARY
COORDINATES ARE CONTAINED IN EXHIBIT NO. 50



ROAD CLASSIFICATION

Primary highway, hard surface ——— Light-duty road, hard or improved surface ———
Secondary highway, hard surface ——— Unimproved road ———
○ Interstate Route □ U. S. Route ○ State Route

BEECHWOOD, IND. - KY.
NW/4 ALTON 15' QUADRANGLE
N3807.5 - W8622.5/7.5

1970
PHOTOREVISED 1981

THE OHIO RIVER BOUNDARY WAS DETERMINED
IN KENTUCKY V. INDIANA, NO. 81, ORIGINAL,
474 U.S. THE FINAL DECREE WAS
ENTERED ON NOVEMBER 4, 1985.

COORDINATE NUMBERS SHOWN WITHIN THIS MAP INDICATE
APPROXIMATE LOCATIONS AND ARE INTENDED AS REFERENCE ONLY

**KENTUCKY v. INDIANA No. 81, Original
JOINT EXHIBIT NO. 27**